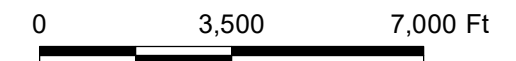
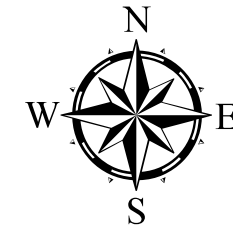


Schoolcraft Township

Kalamazoo County, Michigan

Future Land Use Plan

Adopted: August 10, 2021



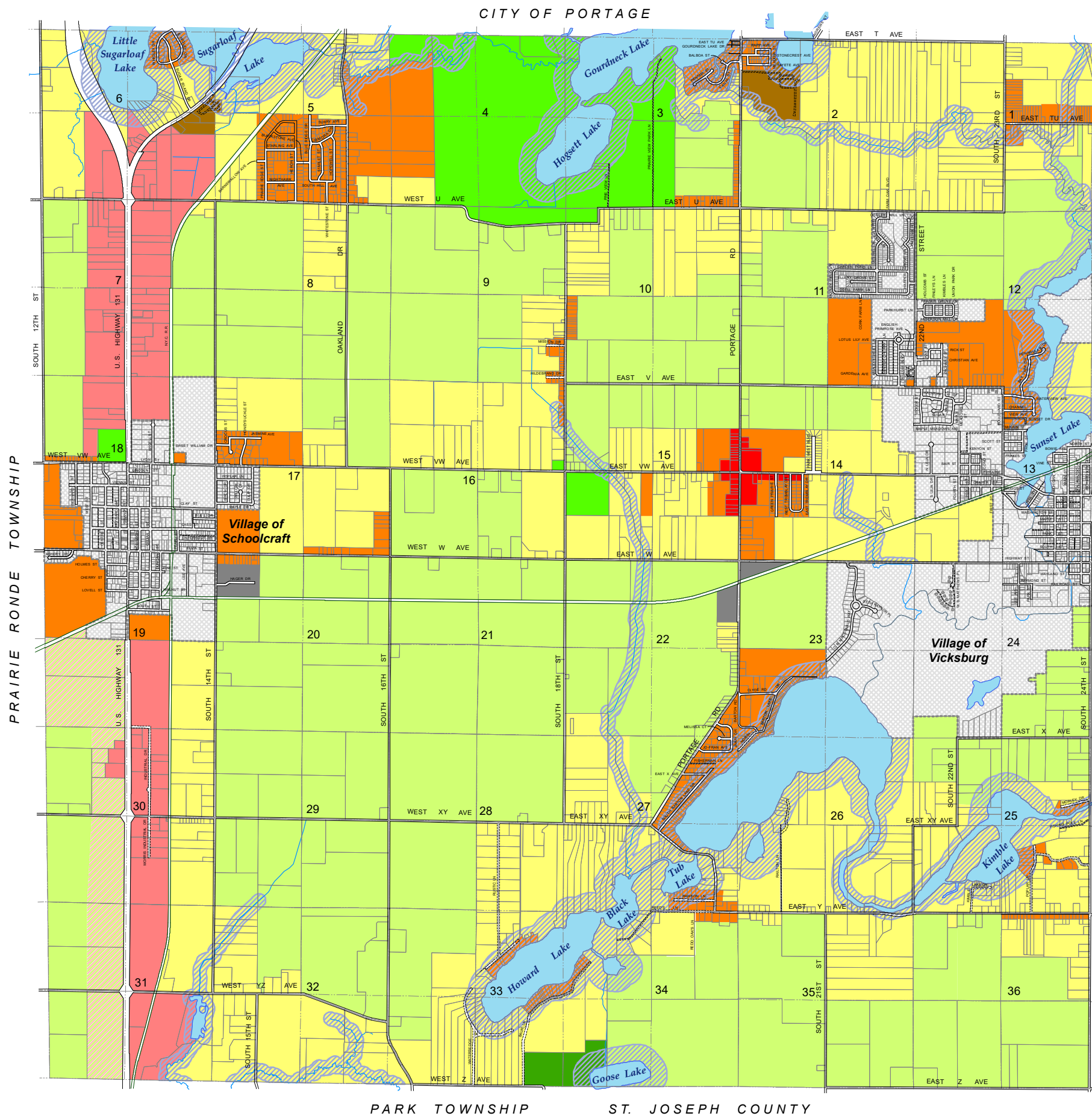
Scale: 1" = 3,500'

LEGEND

- Waterfront Overlay
- Exclusive Agriculture District
- Agricultural Preservation
- Rural Preservation
- Medium Density Residential
- Manufactured Home Park
- Public / Recreational Lands
- Neighborhood Commercial
- Industrial
- US 131 Corridor
- US 131 Overlay

Current Through Ordinance Number: 280
Effective: August 25, 2021

Printed: November 2021



PARK TOWNSHIP ST. JOSEPH COUNTY